

# Vodafone DC-HSPA network coverage maps

NOTE:

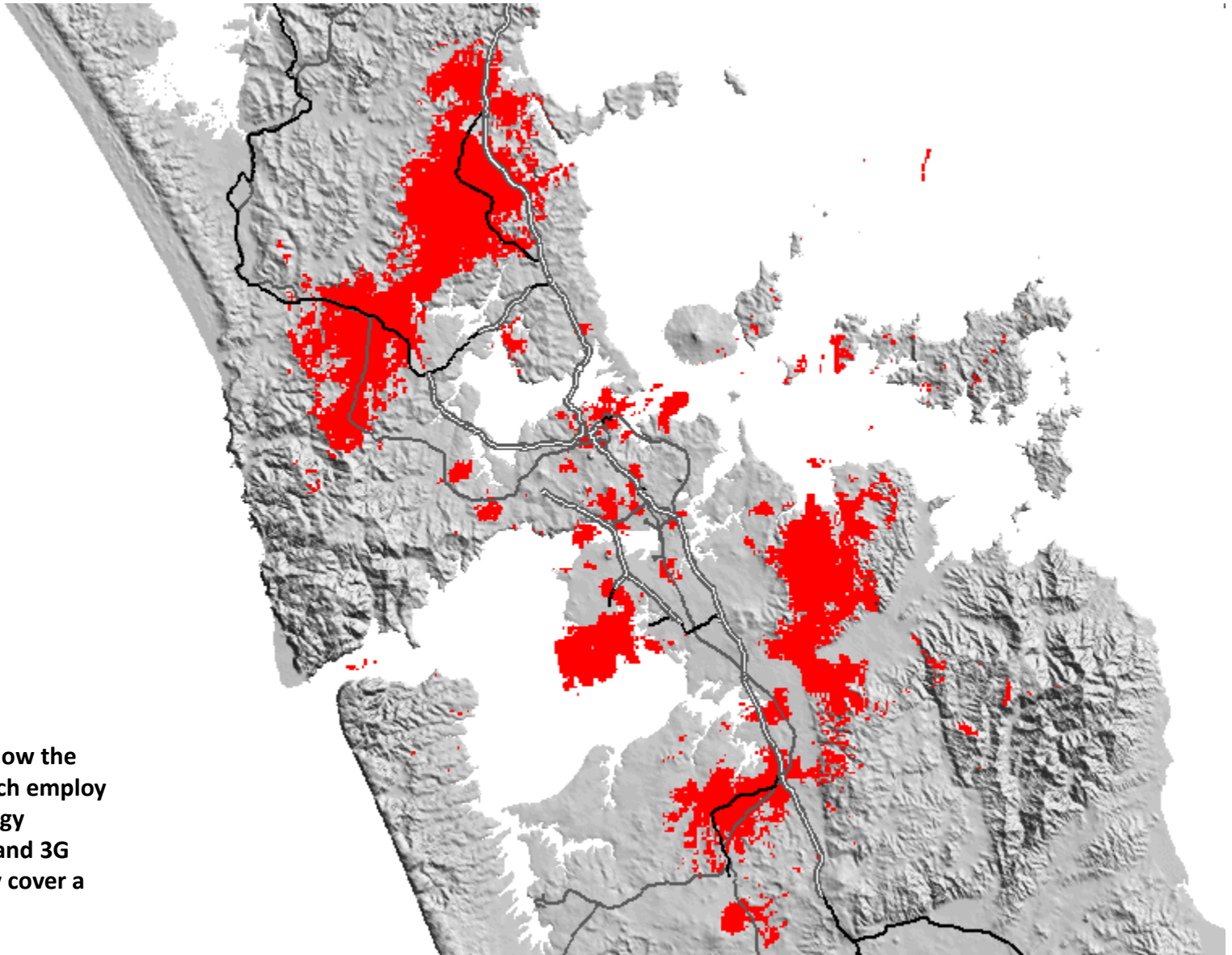
Current as at 19 October 2012

These maps only show the Vodafone sites in Auckland, Wellington and Christchurch which employ DC-HSPA technology

In addition, there are some sites in other areas of New Zealand (including around Waikato, Nelson and Dunedin for example)

Vodafone's full 2G and 3G networks obviously cover a much larger area

## Vodafone DC-HSPA Network Coverage - Wider Auckland



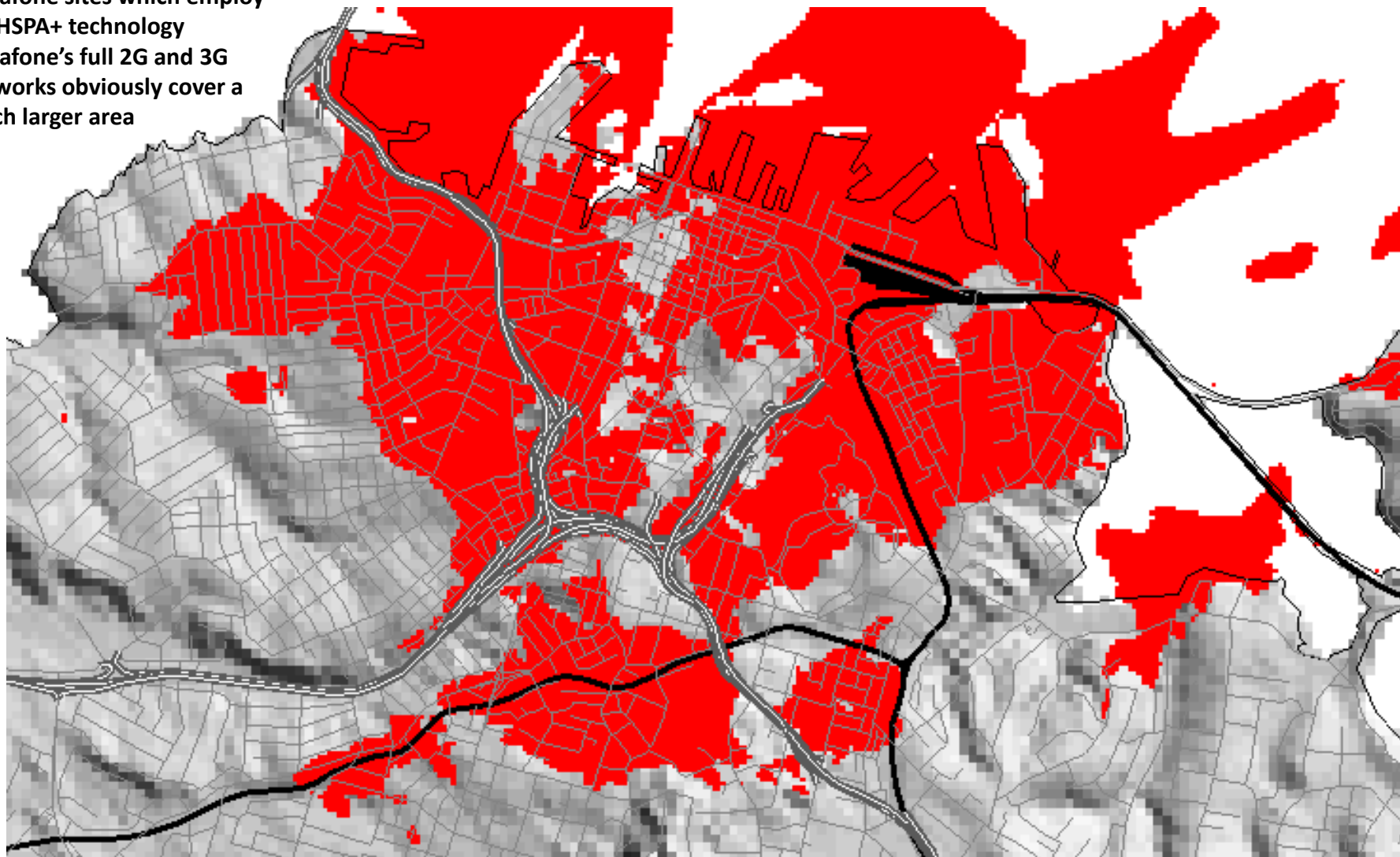
**NOTE:**

These maps only show the Vodafone sites which employ DC-HSPA+ technology  
Vodafone's full 2G and 3G networks obviously cover a much larger area

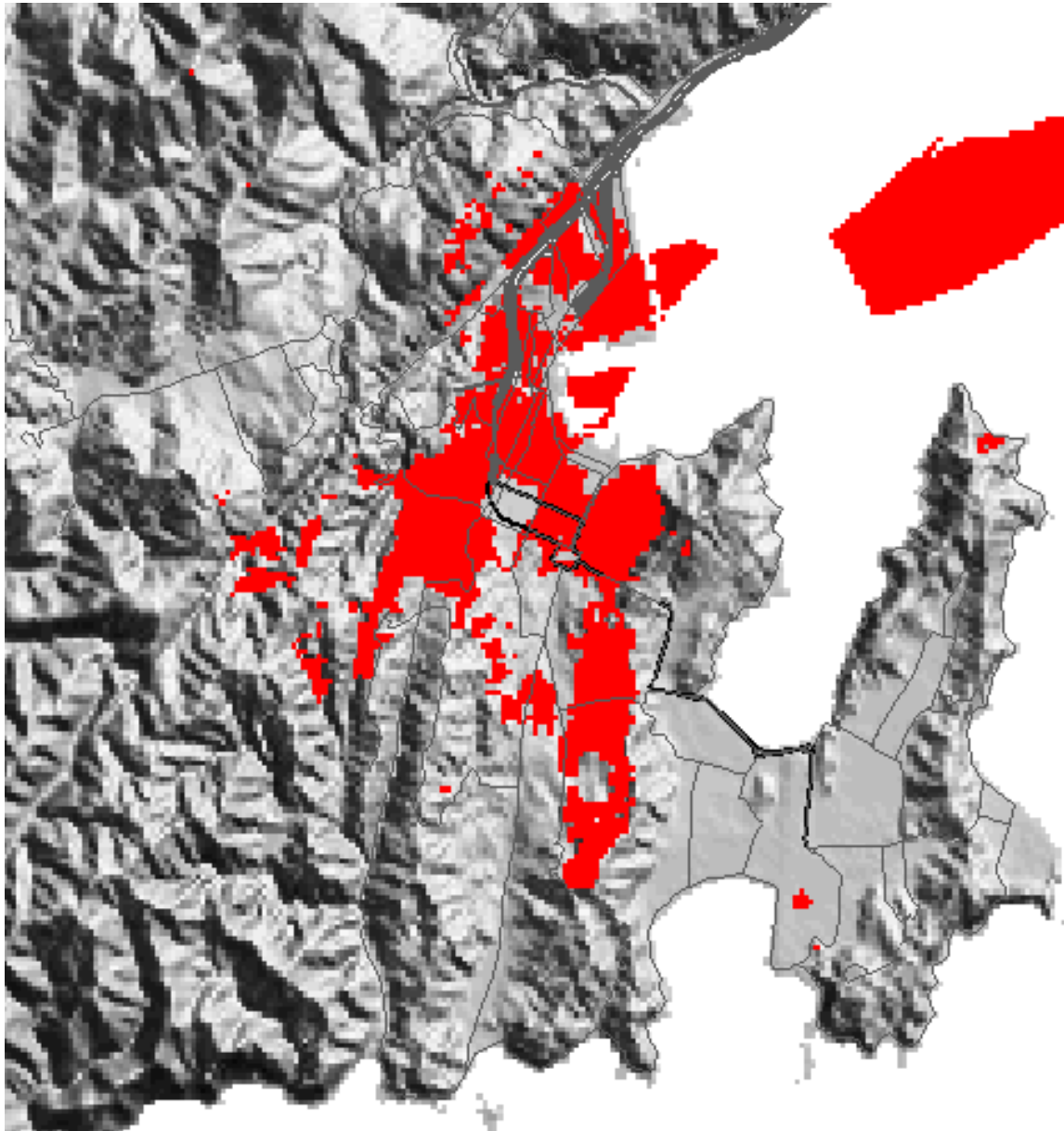
## Vodafone DC-HSPA Network Coverage - Central Auckland

**NOTE:**

These maps only show the Vodafone sites which employ DC-HSPA+ technology  
Vodafone's full 2G and 3G networks obviously cover a much larger area



## Vodafone DC-HSPA Network Coverage - Wellington

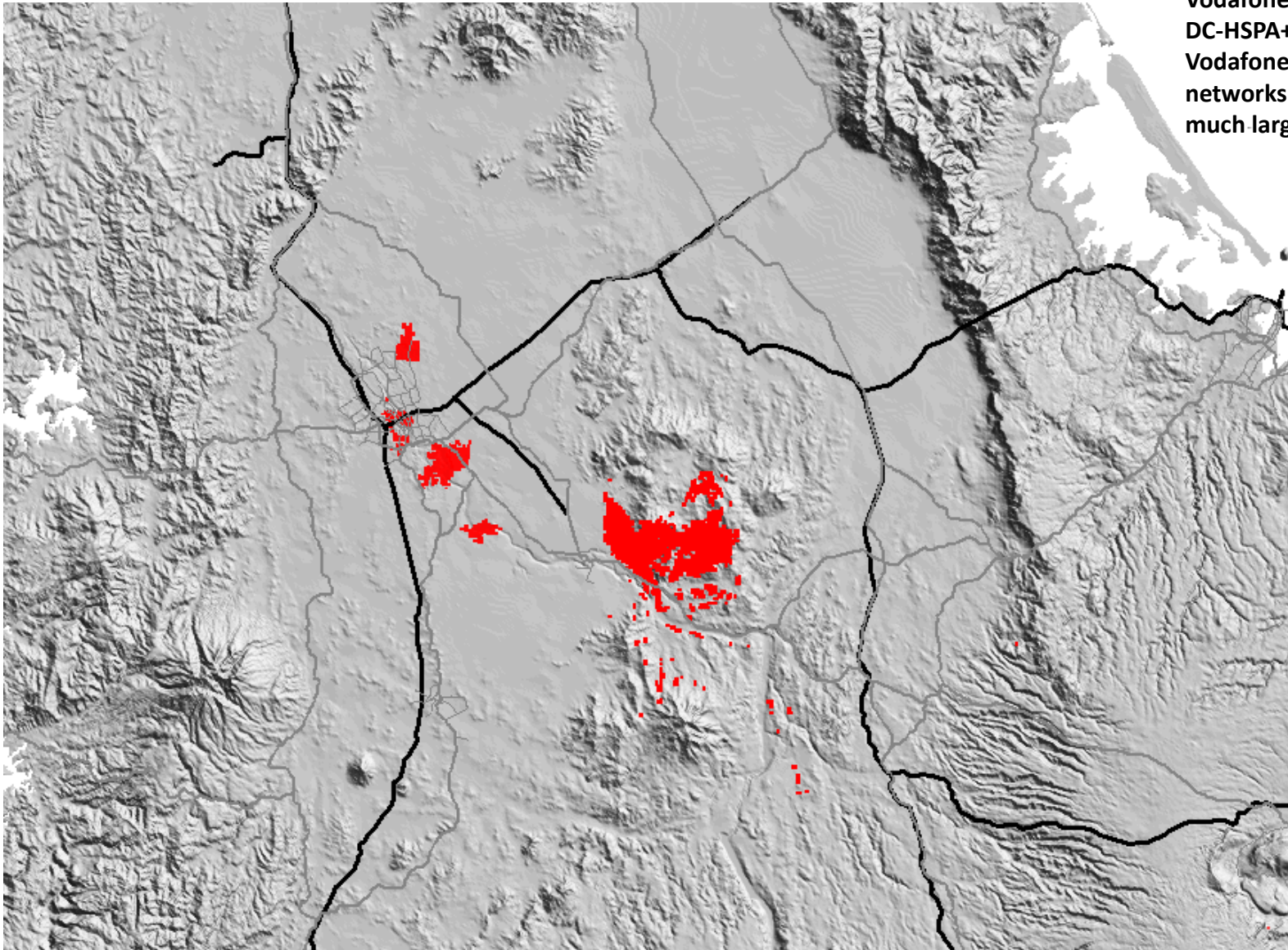


**NOTE:**  
These maps only show the Vodafone sites which employ DC-HSPA+ technology  
Vodafone's full 2G and 3G networks obviously cover a much larger area

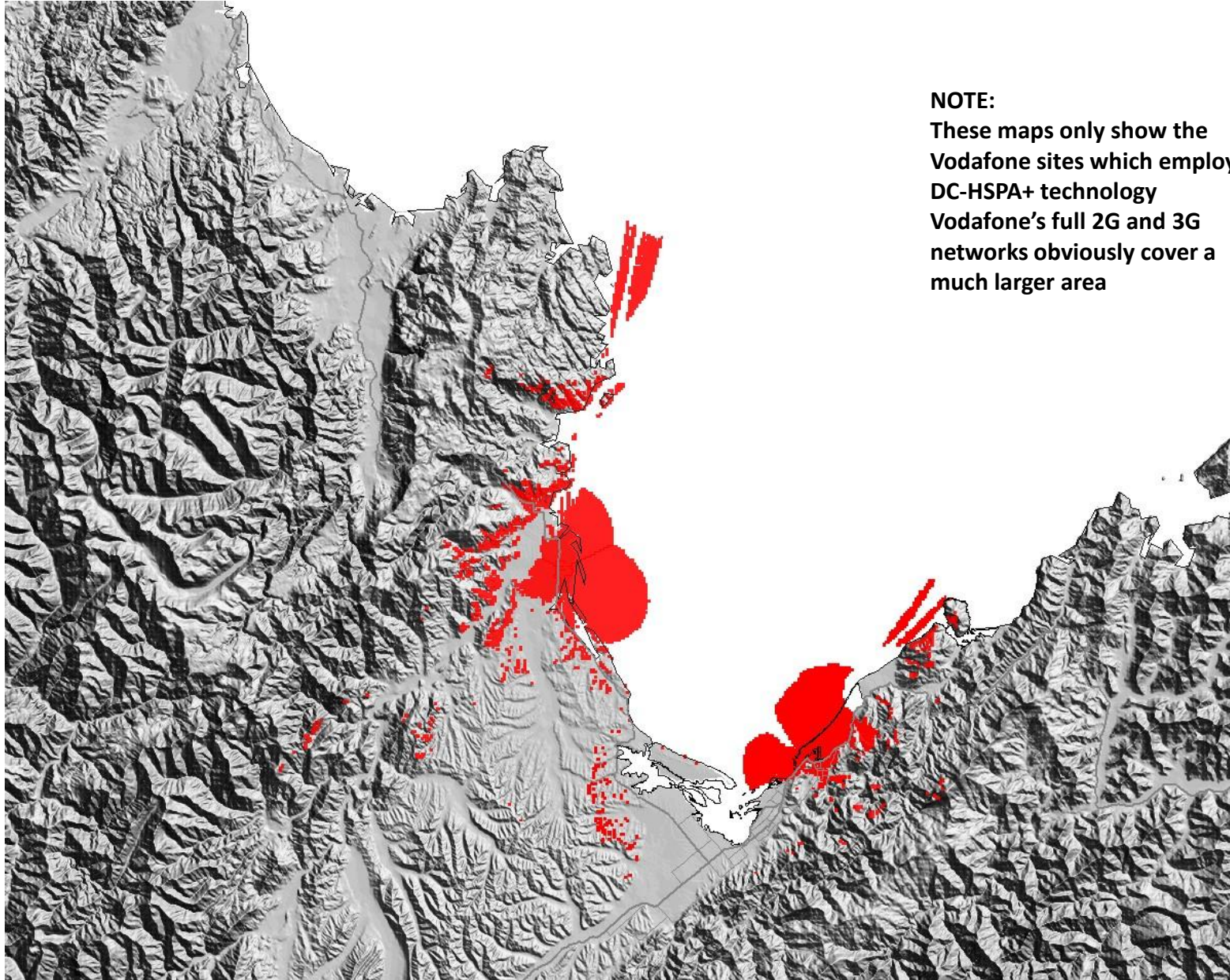
## Vodafone DC-HSPA Network Coverage - Waikato

**NOTE:**

These maps only show the Vodafone sites which employ DC-HSPA+ technology  
Vodafone's full 2G and 3G networks obviously cover a much larger area



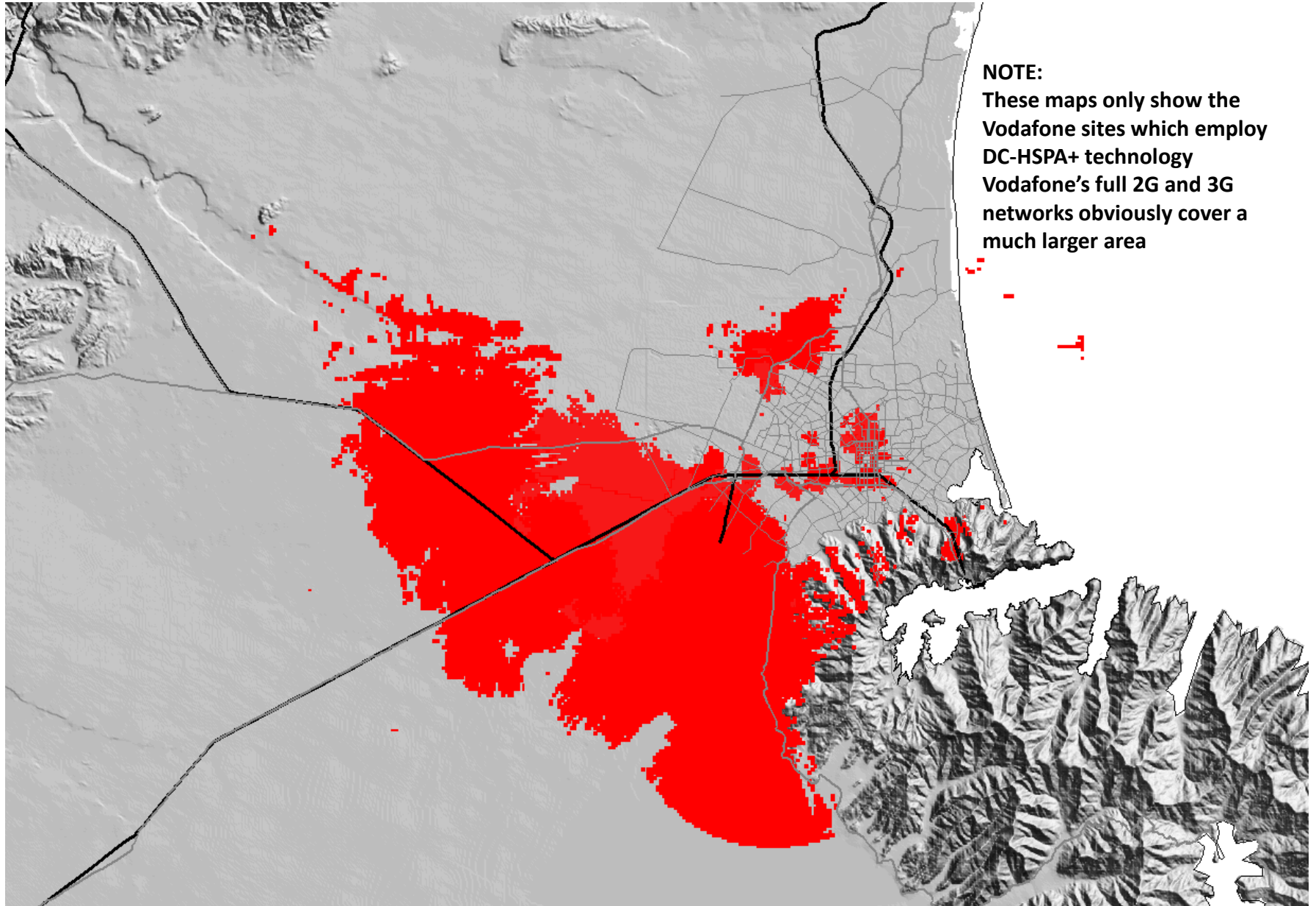
## Vodafone DC-HSPA Network Coverage – Top of South Island



**NOTE:**

These maps only show the Vodafone sites which employ DC-HSPA+ technology  
Vodafone's full 2G and 3G networks obviously cover a much larger area

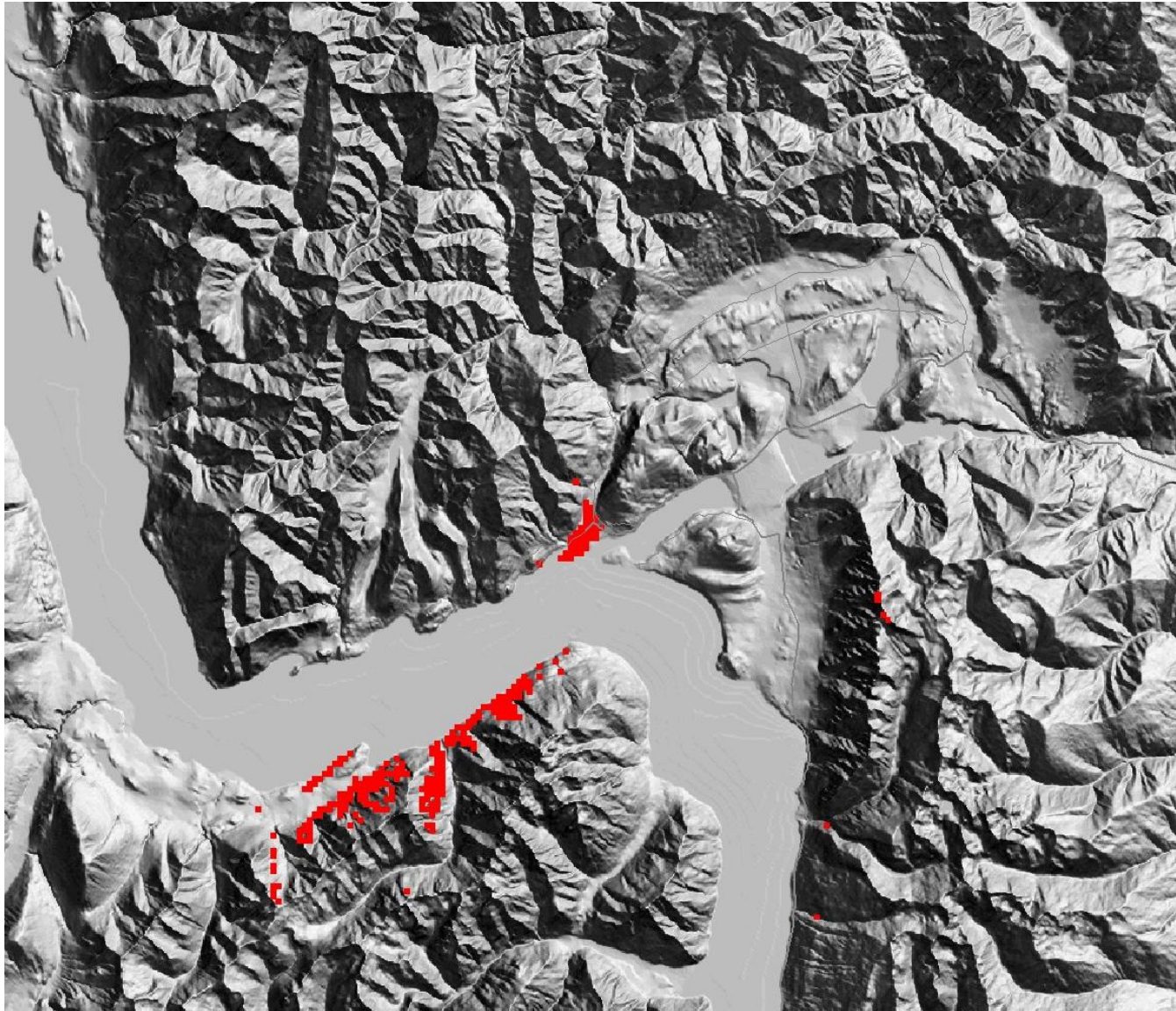
## Vodafone DC-HSPA Network Coverage - Christchurch



**NOTE:**

These maps only show the Vodafone sites which employ DC-HSPA+ technology  
Vodafone's full 2G and 3G networks obviously cover a much larger area

## Vodafone DC-HSPA Network Coverage – Queenstown

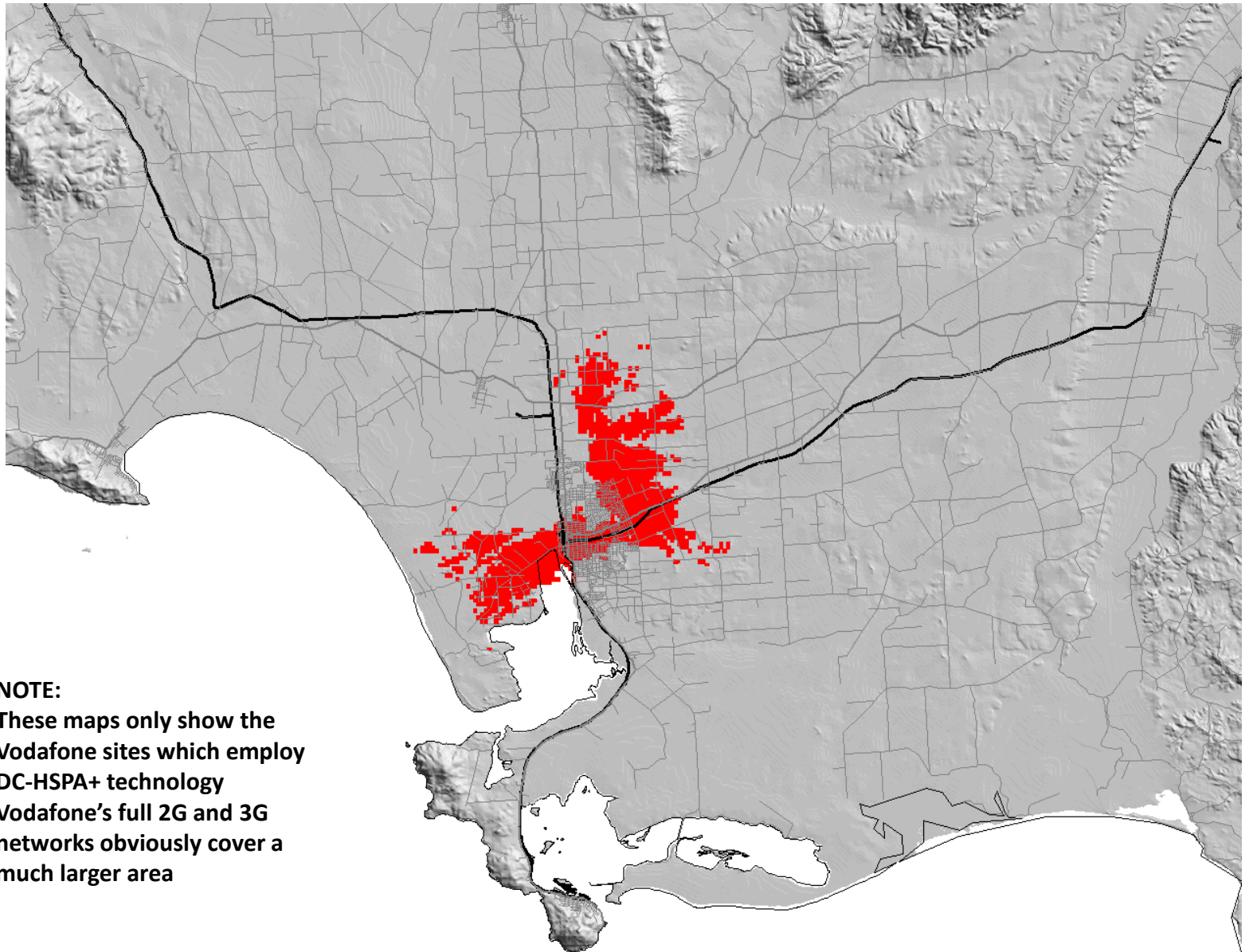


**NOTE:**

These maps only show the Vodafone sites which employ DC-HSPA+ technology  
Vodafone's full 2G and 3G networks obviously cover a much larger area



## Vodafone DC-HSPA Network Coverage – Invercargill



**NOTE:**

These maps only show the Vodafone sites which employ DC-HSPA+ technology  
Vodafone's full 2G and 3G networks obviously cover a much larger area